

modern  
shade LLC



MODERN SHADE FOR ANY APPLICATION

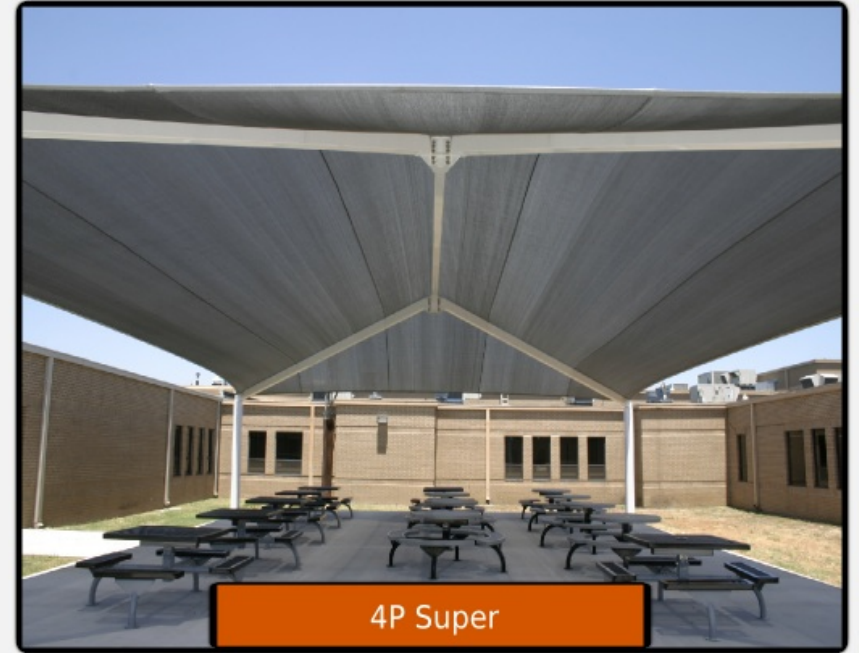
## About Modern Shade LLC

Modern Shade fabric shade structures provide an open feel that cools the air underneath it by as much as **25 degrees** and blocks up to **97%** of harmful **UV** rays. Our framing systems are manufactured with high strength steel and are heavily reinforced. Our commercial structures are designed and engineered for **90mph** winds with fabric installed and **150mph** winds with the fabric removed. Lastly, we back our structures with an unbeatable NON-prorated Warranty. Residential structures are designed and engineered for **60mph** winds..

Did you know that skin cancer is the most common type of cancer in the United States? Scientists have also discovered that overexposure to UV radiation may suppress the body's immune system and the skin's natural defenses leading to skin disorders such as actinic keratosis and premature aging. Research has further shown that UV radiation increases the likelihood of cataracts which can cause blindness if left untreated. Be sun smart, seek shade!

For more information visit [epa.gov/sunwise](http://epa.gov/sunwise).













Triangle Sails



Hypar Sail



Lean-to Sails



Custom Sails

90 mph winds

# Commercial Structure Options

5 psf snow

## Shade Net Colors



Natural



Desert Sand



Yellow



Cayenne



Deep Ochre



Cherry Red



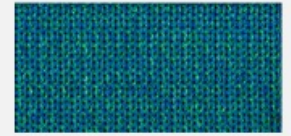
Gun Metal



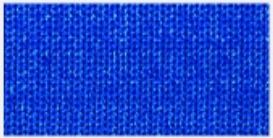
Steel Gray



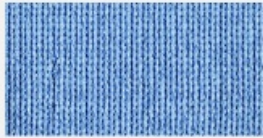
Navy Blue



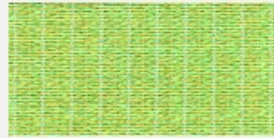
Turquoise



Aquatic Blue



Sky Blue



Rivergum Green



Brunswick Green



Black

## Powder Coating Options

*\*hot dip galvanizing available*



Beige



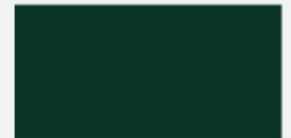
Black



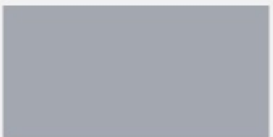
Blue



Brown



Green



Gray



Light Ivory



Red



Yellow



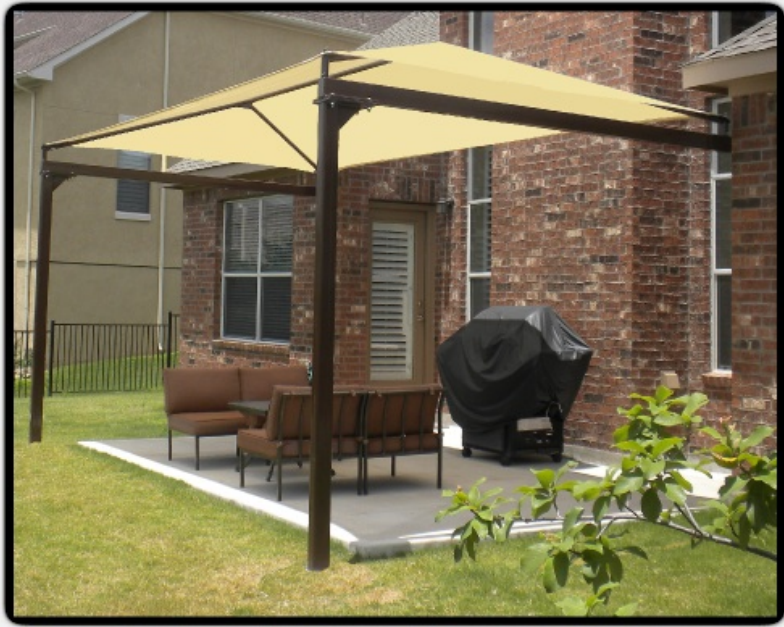
White



60 mph winds

# Residential Shade Structures

Shop Now



4 Post Hip



T Post Pyramid



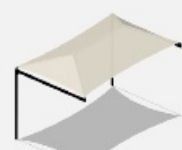
Umbrella



SP Cant Pyramid



4 Post Pyramid



SP Cant Hip



3 Post Sail



4 post Sail



T Post Hip

### Shade Net Colors



Aquatic Blue Desert Sand Steel Gray Brunswick Green



**ACM Playgrounds, Inc.**  
T. 914-739-6858 F. 914-736-0554

### Powder Coating Colors *\*hot dip galvanizing available*



Beige Black Gray Brown